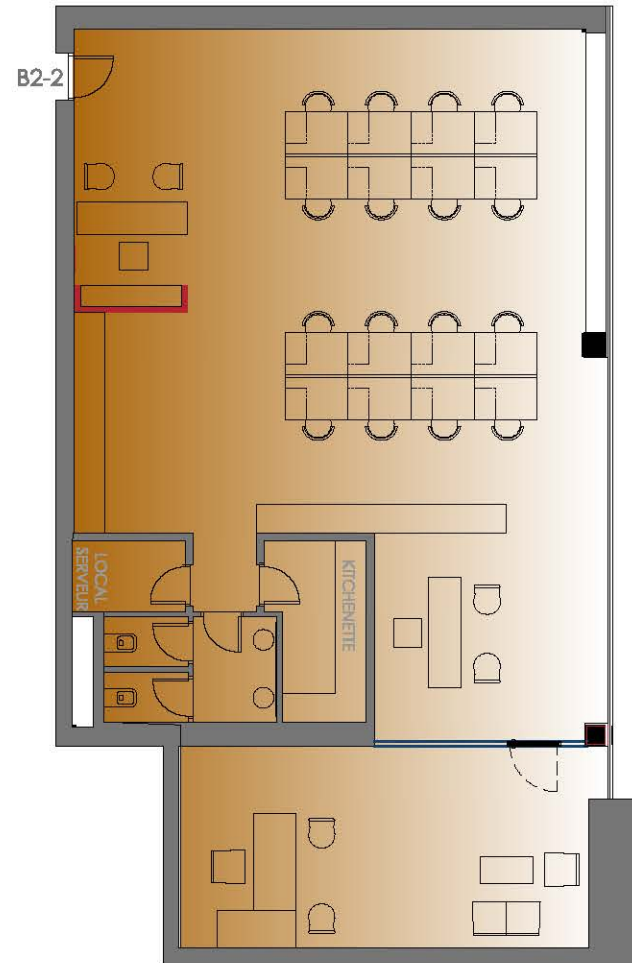


LA PERCEE VERTE

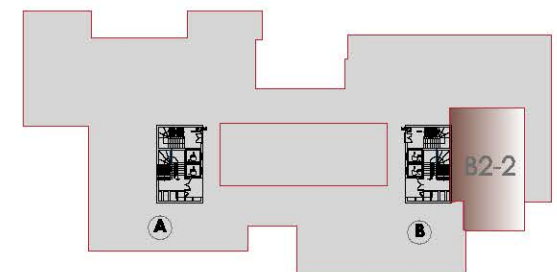
SOCIETE DE PROMOTION
IMMOBILIERE: JOUMAIRA
IMMOBILIERE

CONSTRUCTION D'UN
IMMEUBLE DE BUREAUX
AUX JARDINS DE
CARTHAGE

BLOC B
TYPE BUREAUTIQUE
2EME ETAGE
SURFACE HORS
OEUVRE : 189 m²
SURFACE
VENDABLE: 261.61 m²



ACQUEREUR



SITUATION